

THE COMPLETE GUIDE TO A CAREER IN PRACTICAL NURSING



**Everything you need to know about
starting a career as a Practical Nurse**



WHAT IS A LICENSED PRACTICAL NURSE?

Licensed Practical Nurses are vital members of any healthcare team. In many cases, LPNs are one of the patient's first contacts in a medical facility. The job duties of Licensed Practical Nurses are typically patient-focused, including managing basic patient care.

Practical Nursing could be a great career option for those looking to work in a career that can directly and positively impact the patient's experience in a healthcare facility. LPNs work closely with Registered Nurses to provide routine care to sick and injured patients. Practical Nurses implement care plans that are essential to patient care and comfort.

According to the Bureau of Labor Statistics, approximately 36,800 Licensed Practical Nurses are working in Pennsylvania as of May 2021.



NURSING SHORTAGE IN PENNSYLVANIA

The need for nurses across the United States is at an all-time high, according to The American Nurses Association. The lasting effects of the COVID-19 pandemic have intensified the need for new nurses. Many factors have contributed to the shortage of nurses across America, including the aging population of patients and current nurses. As the Baby Boomer Generation ages, the need for patient care is expected to grow.

Another impact on the workforce as a result of the pandemic is burnout in nursing. As frontline workers, many nurses experience prolonged periods of stress, which can lead to a high turnover rate in some situations. A study by McKinsey & Company showed that up to 22% of nurses have considered leaving the nursing profession due to burnout.



NURSING SHORTAGE IN PENNSYLVANIA

The nursing shortage has been affecting the state of Pennsylvania for some time. According to the National Center for Health Workforce Analysis conducted by the Health Resources and Services Administration (HRSA), by 2030, the need for LPNs is expected to surpass the number of nurses in the workforce by 18,700 LPNs.

HOW UNITED CAREER INSTITUTE CAN HELP

By offering those interested in starting a practical nursing career the option to obtain a diploma in Practical Nursing in just 12 months, United Career Institute allows future nurses to learn the skills and knowledge needed to start their careers and enter the workforce quickly.



ABOUT UNITED CAREER INSTITUTE

United Career Institute (UCI) is a hands-on, short-term career training school located in Irwin, Pennsylvania, serving southwestern Pennsylvania and online students in the area.

UCI is part of a family-owned group of schools in Pennsylvania, West Virginia, and Ohio.

UCI students can expect caring and knowledgeable instructors who uphold our core values, WE CARE, and our purpose:

**To Empower
Change By Creating
Opportunity**

OUR CORE VALUES



W WORK ETHIC

WE ACHIEVE SUCCESS THROUGH HARD WORK AND UNWAVERING COMMITMENT TO OUR PURPOSE.

E EXEMPLARY

WE DEMONSTRATE THE HIGHEST LEVEL OF INTEGRITY, ETHICAL STANDARDS, AND PROFESSIONALISM.

C CARING

WE SUPPORT OUR STUDENTS, COMMUNITIES, AND EACH OTHER, IN WAYS THAT LEAVE LASTING IMPRESSIONS.

A ACCOUNTABILITY

WE MAINTAIN RESPONSIBILITY FOR OUR VALUES AND OUTCOMES.

R RELATIONSHIPS

WE BUILD MEANINGFUL AND TRUSTED RELATIONSHIPS AS THE FOUNDATION OF OUR CULTURE.

E EXCELLENCE

WE EXECUTE GOALS WITH PASSION, PURPOSE, AND PERSEVERANCE, STRIVING FOR THE HIGHEST QUALITY RESULTS.



FIRST STEPS TO BECOMING A PRACTICAL NURSE

Once deciding to pursue a career in nursing as a Practical Nurse, prospective students begin the process of researching schools that offer programs that fulfill education requirements for licensing in Pennsylvania. Licensed Practical Nurses must complete an approved program of at least 1,500 hours and 12 months and it is recommended that the program should provide preparation for the NCLEX-PN* exam.

Before beginning practical nursing school, students must also obtain a high school diploma or GED.

An admissions team member at United Career Institute will outline the application process in detail. One of the first steps is to take the Test of Essential Academic Skills (TEAS) exam.

**Passing the NCLEX-PN exam is required to become a Practical Nurse in Pennsylvania.*



TEST OF ESSENTIAL ACADEMIC SKILLS (TEAS)

The Test of Essential Academic Skills (TEAS) exam is designed by Assessment Technologies Institute (ATI) to evaluate a student's preparedness to enter a health science field.

The TEAS test consists of material from the following subjects: Reading, Mathematics, Science, and English and Language Usage. Students are given three hours and twenty-nine minutes to complete a series of 170 multiple-choice, multiple-select, fill-in-the-blank, ordered responses, or hot spot questions.

Prospective students planning to take the TEAS exam for entrance to the Practical Nursing Diploma program at United Career Institute have access to numerous materials to help them study, including a preparation resources guide. ATI recommends that students prepare for the exam for at least six weeks before taking it, so beginning the process early can help you be successful.



NCLEX-PN EXAM

The National Council Licensure Examination for Practical Nursing (NCLEX-PN)* exam is the industry-passing standard test that reflects a nurse's ability to work as a practical nurse in the field safely and competently. As nursing practices change, the NCSBN Board of Directors reviews the exam every three years and makes necessary changes to ensure the standards are up to date.

The United Career Institute Practical Nursing program includes important preparation for the NCLEX-PN exam, but students also have access to online study methods.

The NCLEX exam is a high-level exam that requires critical thinking and decision-making skills to analyze and answer situation-based questions. The test is divided into four sections based on client needs: Safe and Effective Care Environment, Health Promotion And Maintenance, Psychosocial Integrity, and Physiological Integrity.

**Passing the NCLEX-PN exam is required to become a Practical Nurse in Pennsylvania.*



NCLEX-PN EXAM

The NCLEX exam operates using computerized adaptive testing (CAT) to administer the exam. By using this system, the computer can evaluate the testee by their ability to answer the questions accurately. This allows each exam to be individualized to determine true ability.

The test is graded on a pass-or-fail system determined by one of the following three rules. Learn more about how these rules operate by clicking each box.

The 95% Confidence Rule

The Maximum-Length Rule

The Run-Out-Of-Time Rule



TIPS FOR STUDYING

Studying for these exams can be a process that can span for weeks. By determining what learning tools can help you retain information and get the most out of your time, you can be better prepared to take standardized exams such as the TEAS test or NCLEX exam.

There are various strategies that can help each learning type when studying that benefit their specific needs.

VISUAL LEARNER

Benefits from having visual aids to plan tasks.

Helpful tools:

- Planners
- Calendars
- Color Coding



KINESTHETIC LEARNER

Benefits from being able to physically touch and move.

Helpful tools:

- Sticky Notes
- Diagrams
- Movement



AUDITORY LEARNER

Benefits from hearing and speaking out loud.

Helpful tools:

- Voice Memos
- Background Music
- Study Groups



ACCREDITATION AND APPROVALS

United Career Institute is institutionally accredited by the Accrediting Bureau of Health Education Schools (ABHES) to award associate degrees and diplomas. ABHES is a national accrediting agency recognized by the US Department of Education.



United Career Institute is licensed by the Pennsylvania State Board of Private Licensed Schools.

The United Career Institute Practical Nursing program is approved by the Pennsylvania State Board of Nursing.

United Career Institute offers some programs that are approved by the State Approving Agency for students to use veterans' benefits.



YOUR EDUCATION

Students in the Practical Nursing Diploma program at United Career Institute will complete instruction and clinical experiences in gerontological, medical, surgical, obstetric, and pediatric nursing in the following courses:

Students will utilize the nursing process to provide safe and effective care by applying scientific nursing principles. Additionally, students will be prepared to function as healthcare team members by exercising sound nursing judgment, critical thinking, and competent care for patients.

LPN Diploma Courses

- Nursing Fundamentals Lecture
- Nursing Fundamentals Lab
- Nursing Fundamentals Clinical
- Body Structure and Function Lecture
- Body Structure and Function Lab
- Medical Surgical Nursing I Lecture
- Medical Surgical Nursing I Lab
- Medical Surgical Nursing I Clinical
- Practical/Vocational Nursing I
- Nursing Pharmacology Lecture
- Nursing Pharmacology Lab
- Nutrition for Practical Nursing Lecture
- Maternity Nursing Lecture
- Maternity Nursing Clinical
- Pediatric Nursing Lecture
- Pediatric Nursing Clinical
- Nursing Pharmacology II Lecture
- Nursing Pharmacology II Lab
- Medical Surgical Nursing II Lecture
- Medical Surgical Nursing II Lab
- Medical Surgical Nursing II Clinical
- Practical/Vocational Nursing II Lecture



OUR PROCESS

Using an established, five-step process, United Career Institute can provide quality education, training, and preparation for Practical Nursing students.

LEARN

Classroom instruction to teach you the skills you need in your career.

APPLY

Real-world environment through instructor led clinicals.

START

Begin your professional journey.



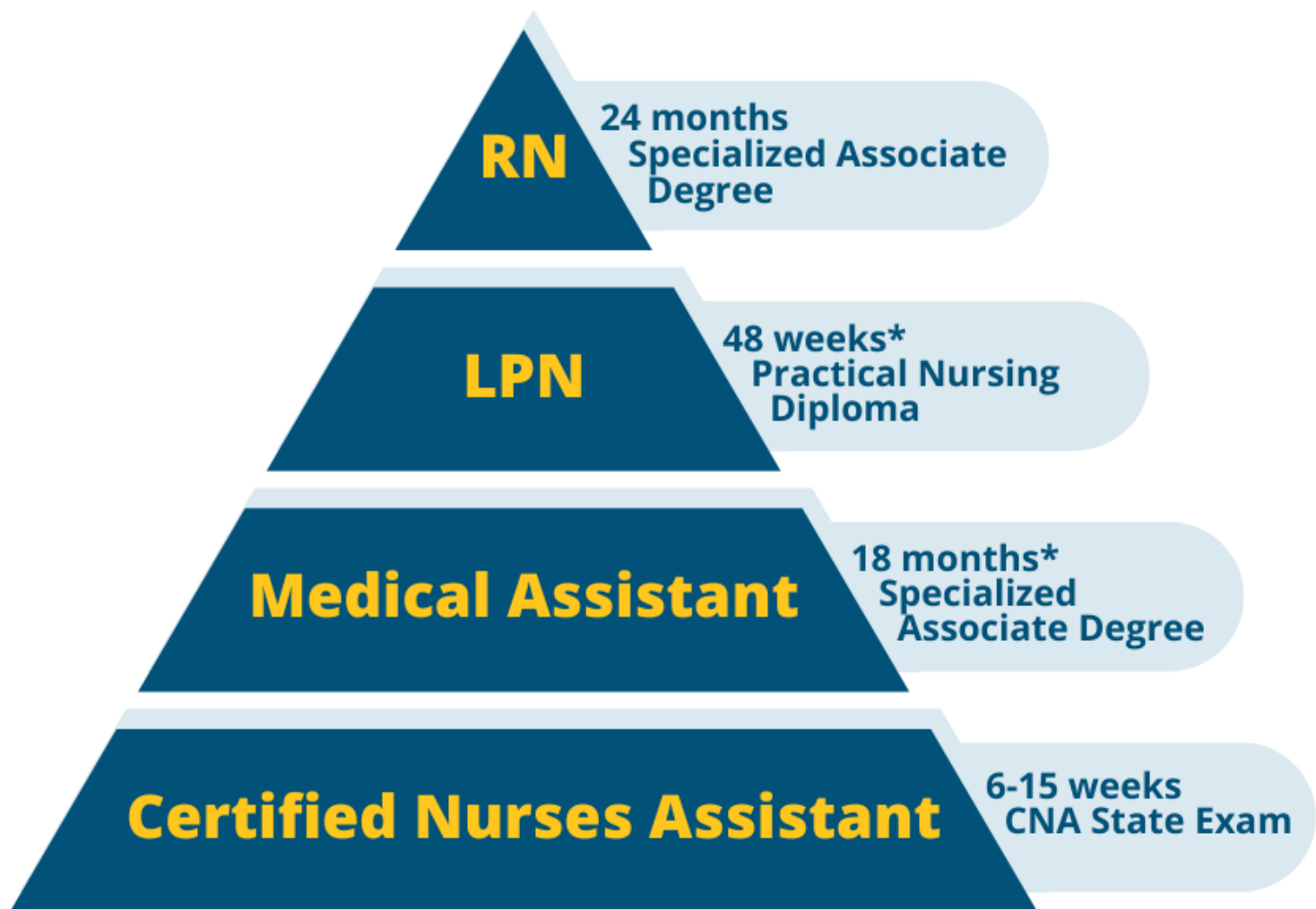
**Passing the NCLEX-PN exam is required to become a Practical Nurse.*



HEALTHCARE POSITIONS IN PENNSYLVANIA

Many healthcare careers are available with varying education levels and time commitments.

Below are the educational requirements and time investments for common positions in Pennsylvania.



**United Career Institute program length.*



THE DIFFERENCE BETWEEN AN LPN AND RN

One of the most notable differences between becoming a Licensed Practical Nurse and a Registered Nurse is the time investment in education. UCI's Practical Nursing Diploma can be completed in only 12 months, while most Registered Nursing programs require students to be in school for 24 months or more.



Licensed Practical Nurse

- 12-month diploma program
- Must pass the NCLEX-PN^o exam
- Works directly with patients providing basic care
- Works closely on teams with doctors and Registered Nurses



Registered Nurse

- Up to 24 months to receive an Associate Degree
- Must pass the NCLEX-RN~ exam
- Coordinates patient care and medication
- Educates healthcare team on health topics

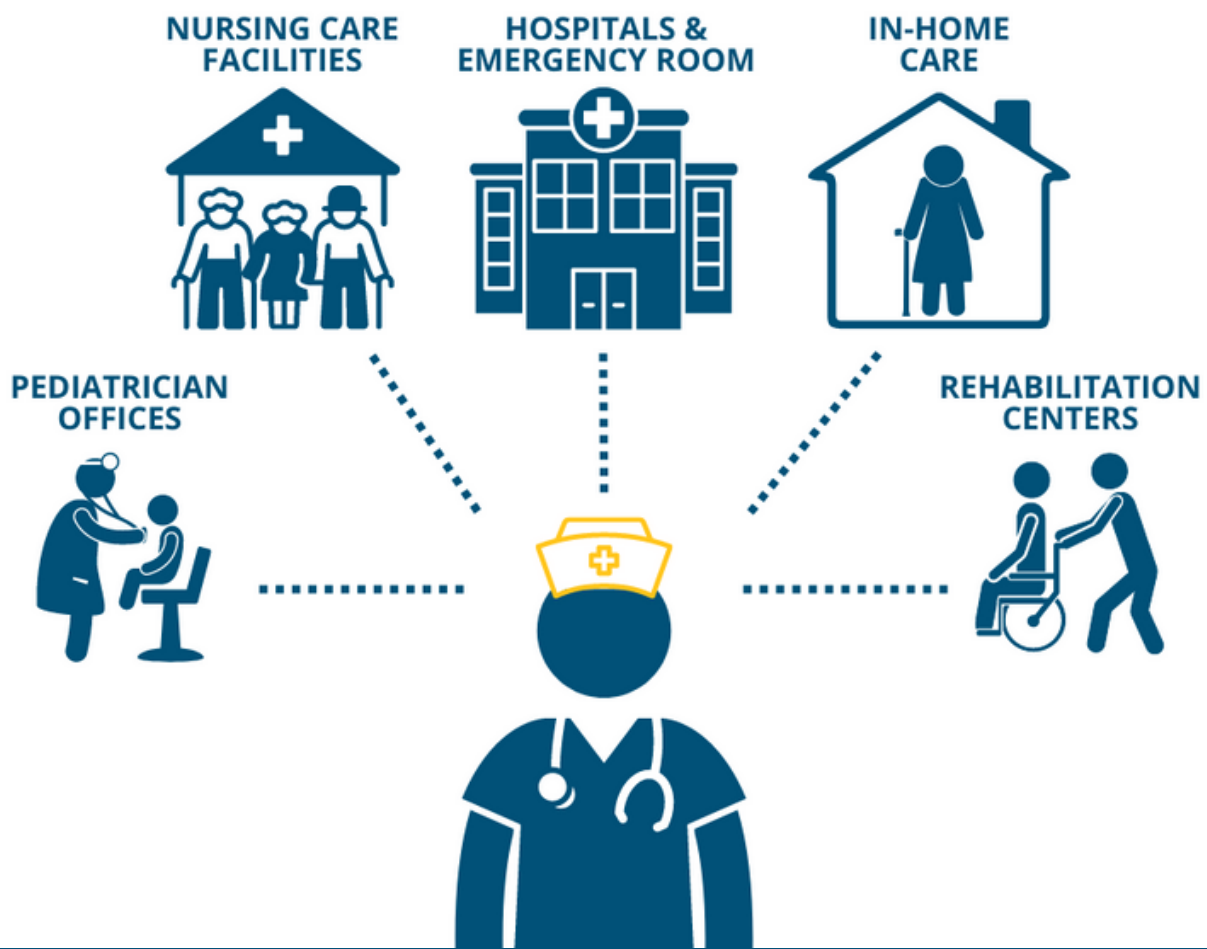
^oPassing the NCLEX-PN exam is required to become a Practical Nurse.

~Passing the NCLEX-RN exam is required to become a Registered Nurse.



WHERE CAN A LICENSED PRACTICAL NURSE WORK?

The skills LPNs learn in their education make them valuable team members in many medical facilities, including long-term care nursing home facilities, in-home agencies, pediatrician offices, hospitals or emergency rooms, private physicians, and more.



BENEFITS OF OUR PROGRAM

At United Career Institute, the student experience is our top priority. We understand that students need to balance family, work, and school. Below are a few of the advantages of your UCI practical nursing journey.

Direct Admission

United Career Institute employs a direct admission policy, meaning students will save time and money by not taking unnecessary classes or taking classes to find out later they are not accepted into the nursing program.

Career and Student Services

At UCI, students have access to support services, including academic, personal, and career, to discuss their goals and how to achieve them. UCI Alumni are also eligible for career management support and refresher courses as their industry evolves.



BENEFITS OF OUR PROGRAM

Hands-On Training and Clinical Experiences

United Career Institute students have the opportunity to learn fundamental skills during lectures, then apply hands-on skills during clinical rotations at local area medical facilities where they will work with actual patients in a real-world environment. At the end of the Practical Nursing program, students will be prepared to sit for the NCLEX-PN* licensure exam.

Accelerated Training

As a result of our direct admission program, students will complete their training in only twelve months.

Accelerated training allows students to learn the necessary practical nursing skills, prepare to sit for the NCLEX-PN* exam, and enter the workforce quickly, rather than spending 4-6 years at a traditional school.

**Passing the NCLEX-PN exam is required to become a Practical Nurse.*



FREQUENTLY ASKED QUESTIONS

Q: What does a Practical Nurse do?

A: In many cases, Practical Nurses work directly with patients, but their skills include reviewing medical histories, collecting samples for lab testing, monitoring vitals, and more.

Q: What is the difference between an RN and LPN?

A: RNs have completed more education and have a larger scope of work than LPNs, who focus on basic patient medical care. Because of their extended education, RNs take on managerial roles and generally can perform more complex procedures.

Q: How long does it take to become an LPN in Pennsylvania?

A: Students in the Practical Nursing Diploma program at United Career Institute can expect to complete their training in 12 months.

Q: Where can an LPN work?

A: Practical Nurses can work in a variety of medical settings, including pediatrician offices, hospitals, emergency rooms, nursing care facilities, home health agencies, or private physicians.

Do you still have questions?
[Click here to contact an admissions team member!](#)



WHY CHOOSE UNITED CAREER INSTITUTE?

At United Career Institute, we are committed to helping our students be successful in their new careers. Check out what these United Career Institute students say about their practical nursing journey at UCI!

"I feel confident and prepared to sit for the NCLEX-PN. If you're considering going into an LPN program, United Career is the place to go."

-Lindsey, United Career Institute Student

"I recommend the school to anyone looking to become an LPN. All the staff and instructors are amazingly helpful and kind."

-Tiffany, United Career Institute Student

"I've had amazing teachers with so much incredible knowledge shaping me into a future nurse."

-Kaylin, United Career Institute Student



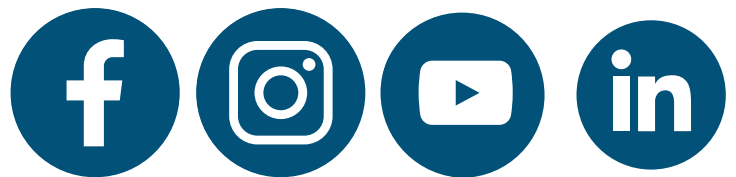
START YOUR JOURNEY TO BECOME AN LPN!

Licensed Practical Nurses* are essential healthcare team members, and United Career Institute is here to help you take the next step to start a respected and valued career.

Are you prepared to begin your education with UCI as a practical nursing student? Our admissions team is ready to help you get started. Take the first step by calling (724)-515-2440 or [Requesting information](#).



**STAY CONNECTED BY
FOLLOWING US:**



**Passing the NCLEX-PN exam is required to become a Practical Nurse.*

